

MSIX Child Counts for MEP Allocations

SEPTEMBER 08, 2022



The mission of the Office of Migrant Education is to provide excellent leadership, technical assistance, and financial support to improve the educational opportunities and academic success of migratory children, youth, agricultural workers, fishers, and their families.



Speakers

U.S. Department of Education
Office of Migrant Education

Dr. Benjamin Starr **Preeti Choudhary**
Dr. Sandra Toro

Deloitte MSIX Team

Sarah Storms
MSIX Operations and Security Lead

Melissa Abrams
MSIX Team Member

Arizona Department of
Education

Dr. Zujaila Ornelas
Migrant Education Program Coordinator

California Department of
Education/WestEd

Heather Medina
ID&R and MSIX Specialist

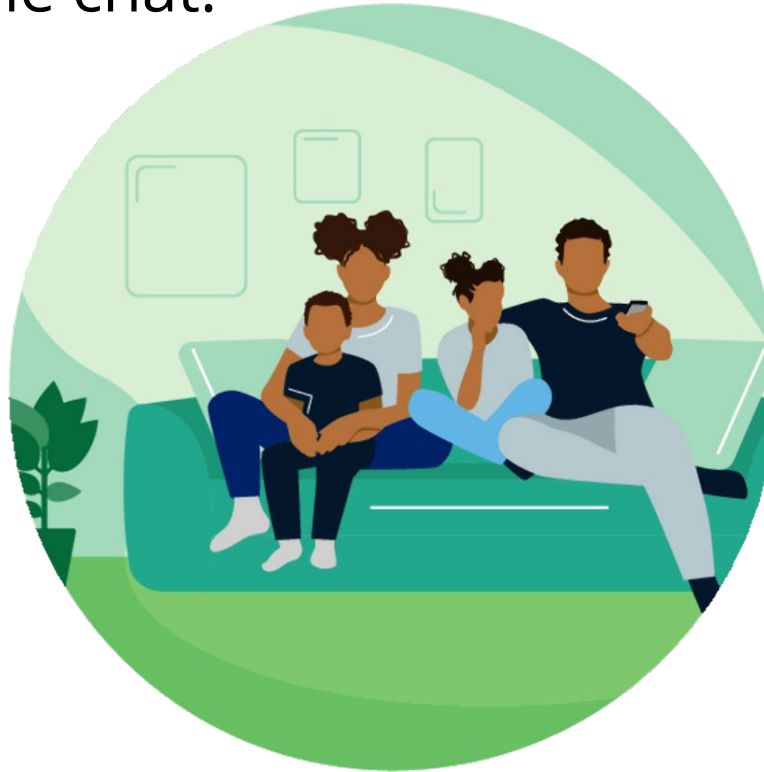
Meena Kaur
MSIX Data Analyst

Juli Auld
California MEP State Director

Pop Quiz

When was the last time you logged in to check your State's child counts for the 2021-22 performance period?

Please let us know in the chat.





Agenda

1. Legal References and State Responsibilities
2. Data Sources and Child Counts
3. Data Collection and Submission, Including Portal and Timeline
4. Multi-Factor Authentication and Privacy
5. MSIX Child Count Logic Updates and Questions
6. Child Count Reconciliation Repot
7. Promising Practices for Child Count Reconciliation
8. Key Notes
9. Q&A

Legal References for EDFacts/Consolidated State Performance Report (CSPR)

Title VIII. General Provisions: Part C – COORDINATION OF PROGRAMS; CONSOLIDATED STATE AND LOCAL PLANS AND APPLICATIONS

SEC. 8303. CONSOLIDATED REPORTING. (20 U.S.C. 7843)

(Elementary and Secondary Education Act (ESEA), as amended by the Every Student Succeeds Act (ESSA))

Code of Federal Regulations (CFR): 34 CFR 76.720

Applies to a State's reports required under 2 CFR

200.329 (Monitoring and Reporting of Program Performance), 2 CFR

200.328 (Financial Reporting) and 34 CFR 200.85 (MSIX Regulations).

Guidance: Migrant Education Program (MEP) Guidance, March 2017,
Chapter IX. Program Performance and Child Count Reporting, pages
96-105.

State Responsibilities for Collecting Performance Report Data

As per statute:

- Each State education agency (SEA) must establish procedures and criteria for submitting a Consolidated State Annual Report (CSPR)
- As noted on the CSPR, it is a crime to make a false statement about a child count (18 U.S.C. §1001).
 - *In addition to submitting the CSPR, each State will submit a certification form stating that the child counts and all other information contained in the CSPR are true, reliable, and valid*

State Responsibilities for Collecting Performance Report Data

The Department recommends:

- Training local operating agency (LOA) staff on key terms and definitions to ensure consistent and accurate reporting
- Having processes in place to review documentation, e.g., project service types, project enrollment lists, attendance rosters, teacher logs, etc., to confirm accuracy of data

EDFacts/CSPR Data Sources

Up to and Including SY 2020-21 - Source and Method:

Each State applied its own child count methodology to the data in its State migrant-specific database. States reported these counts to the Department annually through *EDFacts/* CSPR.

SY 2021-22 and Beyond - Source and Method:

The Department will use MSIX generated child counts in order to apply a single, uniform child count methodology to the data submitted by States to MSIX from States' migrant-specific databases.

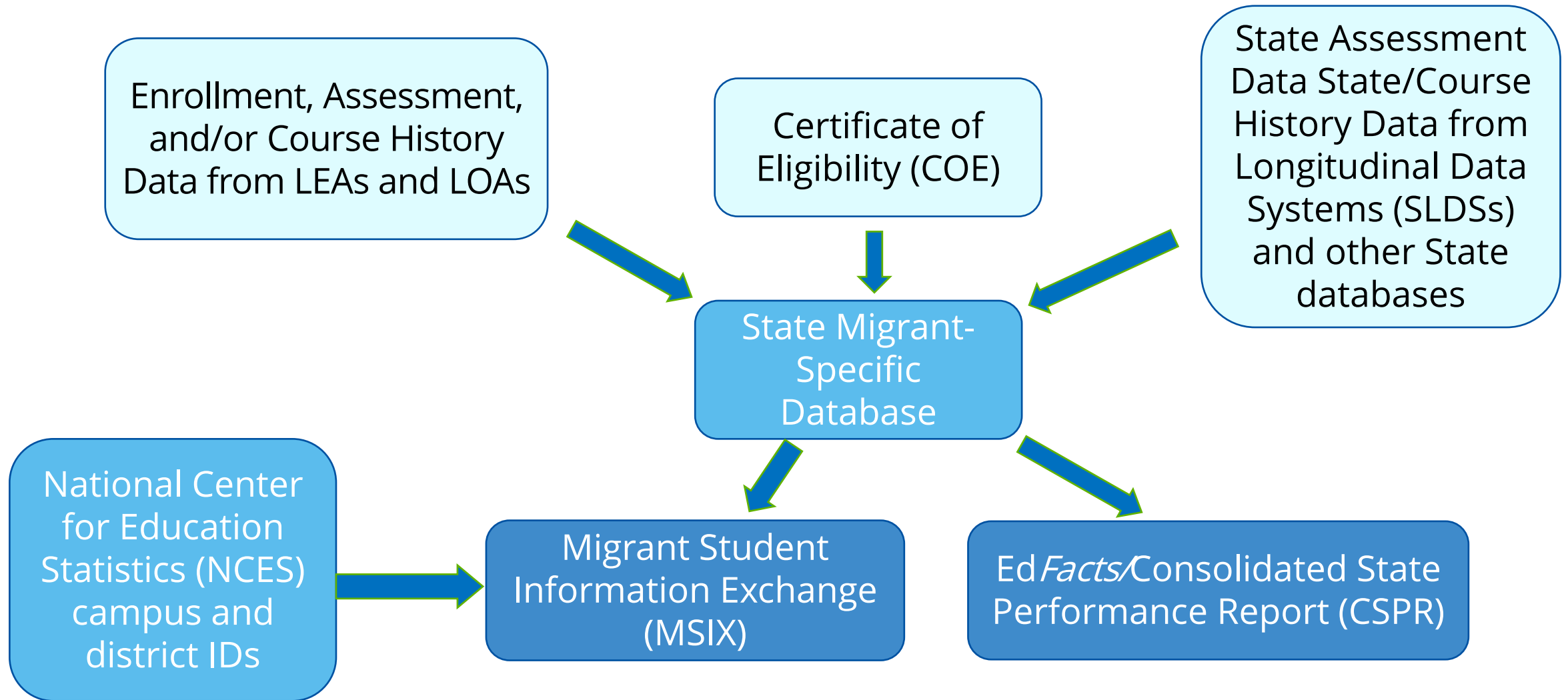
SY 2021-22 MEP Child Counts

1. The Office of Migrant Education (OME) will use MSIX-generated Child Counts
 - States will submit File Specifications (FS) 121 and 122 via *EdFacts*
 - However, OME will not use child count data submitted via ED Facts FS 121 and FS 122
 - Only under exceptional circumstances may a States obtain approval to submit its child count using *ED Facts*
2. There are no changes in FS 121, 122, 054, 145, 165, 032, and State assessment file data submissions

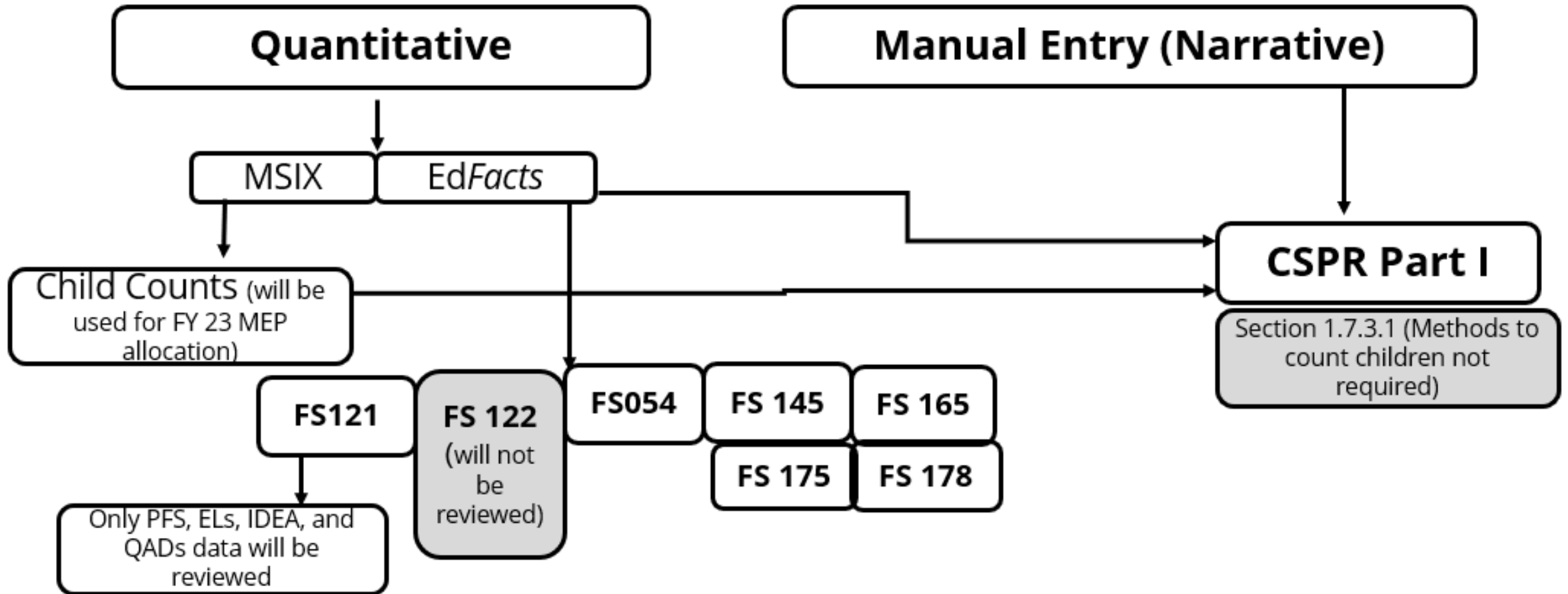
SY 2021-22 MSIX Generated Child Counts

- OME will accept only MSIX generated category 1 and category 2 child counts for SY 2021-22
- States must have a policy and procedure in place to submit accurate child counts
- States should run the MSIX Child Count Reconciliation Report and resolve any issues **before 9:00 pm EST on December 22, 2022**
- MSIX Snapshot will be taken on **December 24, 2022**
- States should reach out to MSIX Help Desk for technical assistance
 - MSIX Help Desk: MSIXSupport@deloitte.com or 1-866-878-9525

MEP Data Collection Sources



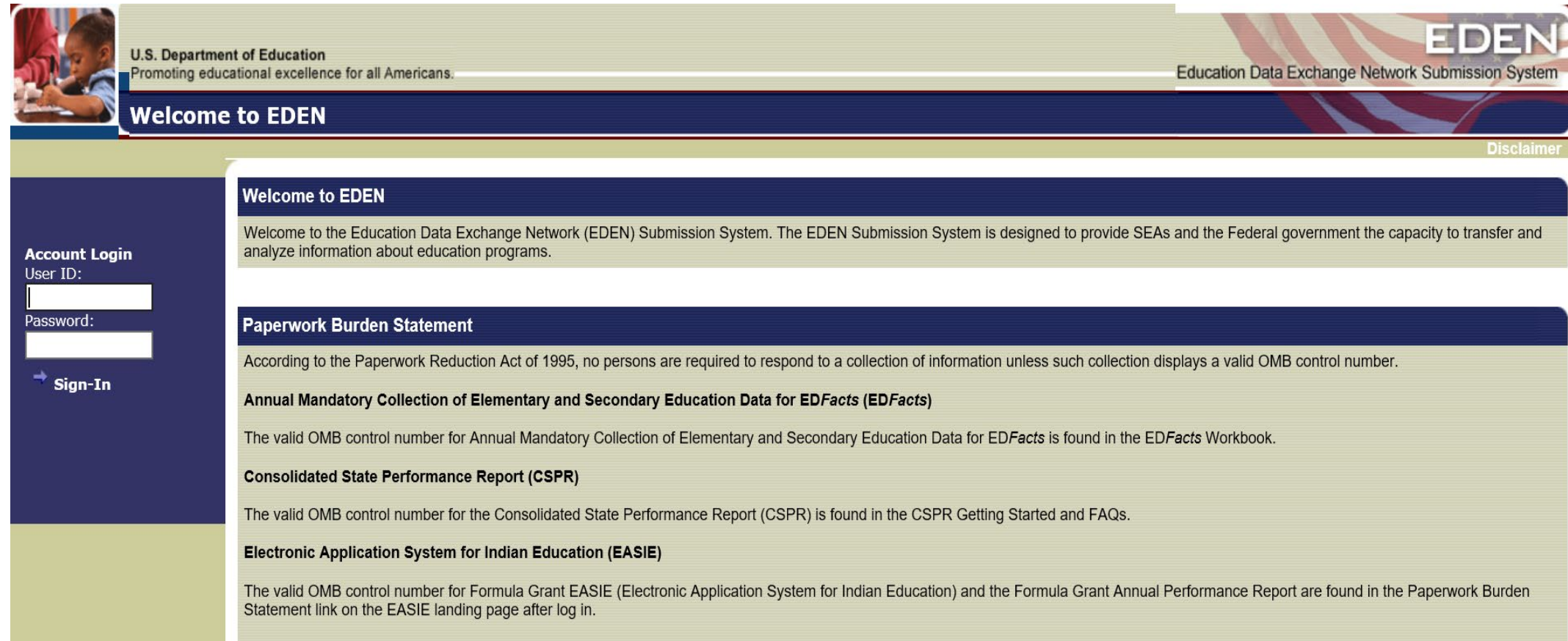
MEP Data Collection Flowchart



MEP Data Collection - Data Elements by FS

File Specification	FS121	FS122	FS054	FS145	FS165	FS175	FS178
✓ SEA Level Data	✓ Eligible migratory students - 12 month	✓ Eligible and served summer/ ✓ intersession term	✓ MEP students served - 12 month	✓ Eligible migratory children who receive MEP services	✓ Consolidated MEP Funds Status	✓ MATH ASSESSMENT DATA	✓ RLA ASSESSMENT DATA
✓ SEA Level Data	✓ Age/Grade	✓ Age/Grade	✓ Age/Grade	✓ Age/Grade			
✓ SEA Level Data	✓ PFS - Eligible	✓ OSY	✓ PFS - Served	✓ MEP Services			
✓ SEA Level Data	✓ ELL		✓ Instructional Services	✓ OSY			
✓ SEA Level Data	✓ IDEA		✓ Support Services				
✓ SEA Level Data	✓ QAD		✓ COS				
✓ SEA Level Data	✓ OSY		✓ OSY				

Data Submission Portal



U.S. Department of Education
Promoting educational excellence for all Americans.

EDEN
Education Data Exchange Network Submission System

Welcome to EDEN

Disclaimer

Account Login
User ID:

Password:

[Sign-In](#)

Welcome to EDEN

Welcome to the Education Data Exchange Network (EDEN) Submission System. The EDEN Submission System is designed to provide SEAs and the Federal government the capacity to transfer and analyze information about education programs.

Paperwork Burden Statement

According to the Paperwork Reduction Act of 1995, no persons are required to respond to a collection of information unless such collection displays a valid OMB control number.

Annual Mandatory Collection of Elementary and Secondary Education Data for EDFacts (EDFacts)

The valid OMB control number for Annual Mandatory Collection of Elementary and Secondary Education Data for EDFacts is found in the EDFacts Workbook.

Consolidated State Performance Report (CSPR)

The valid OMB control number for the Consolidated State Performance Report (CSPR) is found in the CSPR Getting Started and FAQs.

Electronic Application System for Indian Education (EASIE)

The valid OMB control number for Formula Grant EASIE (Electronic Application System for Indian Education) and the Formula Grant Annual Performance Report are found in the Paperwork Burden Statement link on the EASIE landing page after log in.

CSPR Part I Data Submission will occur via Illume Portal

Data Submission Timeline

- Ed*Facts* First Due Date: 12/21/2022 (12:00 PM EST)
- Ed*Facts* Second Due Date: TBD
- CSPR First Due Date: 12/22/2022 (5:00 OM EST)
- CSPR Second Open Date: TBD
- CSPR Second Due Date: TBD
- MSIX First/Final Snapshot Due Date: 12/24/2022

Note: MSIX Second Snapshot will apply only in exceptional circumstances.

OME Office Hours: November 17 from 3:00 PM to 4:00 PM ET

Multi-Factor Authentication (MFA) is Here!



MSIX MFA Setup

When you configure MFA on your account, MSIX will guide you through MFA configuration step-by-step!

MSIX MFA Office Hours

The MSIX Team will offer office hours to support users with configuring MFA to use with their MSIX account. The MSIX MFA office hour dates are September 21st, October 5th, and October 19th



MSIX MFA Train-the-Trainer Webinar

The webinar deck is now available to all MSIX users. Please select the Training link from the left-hand navigation pane within the MSIX application and look for the title “MSIX MFA Train the Trainer Webinar 2022.”

Privacy Reminder

Protecting a child's Personally Identifiable Information (PII) is paramount when using MSIX.

The Migrant Student Information Exchange (MSIX) contains real and sensitive student data that **should not be shared** with anyone who is not authorized to access the information.

Please do not e-mail children's information or MSIX application screenshots to the MSIX Help desk. If there is a PII incident, contact the MSIX Help Desk immediately.

MSIX Child Count Logic Updates | *Category 1*

Children appear on the Category 1 Children Included list if one of the dates that establishes residency (Enrollment Date, Withdrawal Date, Residency Date, Residency Verification Date) occurs **during the performance period satisfies all of the following criteria:**

- a) This date must occur **on or after** the child's 3rd birthday **and before** the child's 22nd birthday.
- b) The Qualifying Arrival Date (QAD) must occur **on or before** this date.
- c) The Eligibility Expiration Date must occur **on or after** this date.
- d) If a Graduation/HSE Date is submitted, it must occur **on or after** this date.
- e) Enrollment Type associated with this date must be 01, 02, 03, 04, 05, or 06.

Continuation of Services Reason associated with this date **no longer must** be blank or 01.

MSIX Child Count Logic Updates | *Category 2*

Children appear on the Category 2 Children Included list if they are included in the Category 1 Included list AND the date that establishes residency (Enrollment Date, Withdrawal Date, Residency Date, Residency Verification Date) occurs during the performance period and satisfies all of the following criteria:

- a) This date must occur on or after the child's 3rd birthday and before the child's 22nd birthday.
- b) The Qualifying Arrival Date (QAD) must occur on or before this date.
- c) The Eligibility Expiration Date must occur on or after this date.
- d) If a Graduation/HSE Date is submitted, it must occur on or after this date.
- e) Enrollment Type associated with this date must be 03 Summer/Inter-session MEP-Funded Project.

- Enrollment date is no longer the only date that can establish residency.
- Continuation of Services Reason associated with this date no longer must be blank or 01.

Child Count Reconciliation Report



Report | Access

The Child Reconciliation Report is only available to MSIX users with the Data Administrator Role.

The screenshot displays the MSIX web application interface. On the left is a dark sidebar with navigation links: HOME, SEARCH, WORKLIST, MY LISTS, REPORTS (highlighted in green), STATE/REGIONS, ADMINISTRATION, HELP, MY ACCOUNT, and SIGN OUT. The top right shows a 'Welcome' message with a dropdown arrow. The main content area features several report sections. The 'Data Quality' section includes links for File Submission, Potential Duplicates, Data Validity, Data Logic Issues, and Data Completeness. The 'Child Count Reconciliation' section, which is highlighted with a black border, contains a description and a 'Run Reconciliation' link with a black arrow pointing to it. Below this is the 'Student Mobility' section with links for General Move From and General Move To. The 'User Account' section is partially visible at the bottom.

msix

Welcome

Merges & Splits by User
Merges & Splits by Age
Data Requests by Age

Move Notices

Data Quality
Data Quality reports help State and Regional Data Administrators verify data quality compliance levels by showing recent files submitted by States and displaying student records that contain incomplete or invalid data, potential duplicates, and data logic issues. [34 CFR § 200.85 (d)]

File Submission
Potential Duplicates
Data Validity
Data Logic Issues
Data Completeness

Child Count Reconciliation
Child Count Reconciliation reports help you identify data quality issues in student records that may cause differences in child counts between MSIX and your State system.

Run Reconciliation

Student Mobility
Student Mobility reports display data on children moving to and from different States. Use these reports to analyze patterns and plan identification and recruitment (ID&R) efforts.

General Move From
General Move To

User Account


Report | *Child Count Reconciliation Dashboard*

Reports

Child Count Reconciliation Overview

This dashboard displays the number of Category 1 and Category 2 migratory children included and excluded from the MSIX child count. It also provides reports that help you identify issues that may be causing discrepancies between MSIX and your State system. See "How should I use this dashboard?" for additional guidance.

[How should I use this dashboard?](#)

Filter  Showing: Last performance period (September 1, 2020 - August 31, 2021)

Category 1

Data reflects files submitted on or before 08/26/2022

The counts below represent the total unduplicated number of MSIX IDs included and excluded from the Category 1 child count for the performance period.

Included 1,947

Excluded 527

[View Details](#)

Category 2

Data reflects files submitted on or before 08/26/2022

The counts below represent the total unduplicated number of MSIX IDs included and excluded from the Category 2 child count for the performance period.

Included 163

Excluded 0

[View Details](#)

MSIX Record Issues

Data reflects files submitted on or before 08/26/2022

Review potential duplicates and pending near matches that you need to resolve to ensure each child appears in the appropriate category on the MSIX Child Count Report.

Potential Duplicates 0

[Review](#)

Near Matches 0

[Review](#)

MDEs and System Data

Data reflects files submitted on or before 08/26/2022

Review your data in the reports below to identify Minimum Data Elements (MDEs) with values that are missing, invalid, or have logic issues that are causing children to be excluded from the MSIX child count.

Child Count MDE Completeness

[Review](#)

Child Count MDE Validity

[Review](#)

Child Count Logic Issues

[Review](#)

Promising Practices for Child Count Reconciliation



Reconciling Category 1 Child Counts

- Set filter to the performance period for which you want to reconcile counts
- Export **MSIX Category 1 Included List**
- Export list of **Category 1** student records for the same performance period from MIS2000
- Perform a comparison of the data
 - Use **VLOOKUP** or **INDEX Match** in Excel to find student records in MIS2000 list but not in MSIX list and vice versa



Reconciling Students Records That Are in MIS2000 but not in MSIX

- Use **Category 1 Excluded List** in MSIX
- Click on student's **Excluded Child Detail Page**
- Review Data Logic issues, identify updates that need to be made, and make changes in MIS2000
- Work with LEA to identify a valid date for the child (enrollment date, withdrawal date, residency date, or RES VER date)



Migrant Student Information Network—MSIN

MSiN Migrant Student Information Network

Workbench

COE

Children

Child Reports

Counts

Enrollments

Services

Academic Risk

PFS

Communication Events

Graduation

INA/ILP

Data Monitoring Reports

SSDP Reports

Counts Report

Search Criteria

Select Regions

Select School Districts

Performance Period 2021-22

Search

Reset

Export

Unduplicated Total (All Regions) (2021-22)

	EiP	CAT I	CAT II	Eligible Today
Unduplicated Total	71,174	68,599	21,677	55,814

MSIN

CAT1

CAT2

18-Aug

68,599

21,677

Four-Day Cycle Reconciliation Process

A	D	E	F	G
2021-22				
Four-Day Cycle Reconciliation Tracking Sheet				
MSIN	2-Aug	8-Aug	12-Aug	18-Aug
CAT1	66,821	67,422	68,095	68,599
CAT2	12,745	15,733	18,954	21,677
MSIX	2-Aug	8-Aug	12-Aug	18-Aug
CAT1	66,015	66,760	67,139	67,685
CAT2	10,325	12,641	14,866	18,776
Count Difference on MSIX				
CAT1	2-Aug	8-Aug	12-Aug	18-Aug
CAT2	-596	-61	=F8-E4	-410
	-1,373	-104	-867	-178

Click here to open a copy of this template:



Child Count Tracking Template



Count Difference Results

A	D	E	F	G
2021-22				
Four-Day Cycle Reconciliation Tracking Sheet				
MSIN	2-Aug	8-Aug	12-Aug	18-Aug
CAT1	66,821	67,422	68,095	68,599
CAT2	12,745	15,733	18,954	21,677
MSIX	2-Aug	8-Aug	12-Aug	18-Aug
CAT1	66,015	66,760	67,139	67,685
CAT2	10,325	12,641	14,866	18,776
Count Difference on				
MSIX	2-Aug	8-Aug	12-Aug	18-Aug
CAT1	-596	-61	-283	-410
CAT2	-1,373	-104	-867	-178

Key Notes



Key Notes



Don't wait until the last minute to use the MSIX Child Count Reconciliation Report! You can use it at anytime throughout the year. It's recommended to use it around key milestone dates within your State.



It takes 3 business days after student records are submitted to MSIX for changes to be reflected in the MSIX Child Count Reconciliation Report.



If you do not see changes in MSIX that are applied in your State system, you should work with your technical team to ensure those changes are being accurately submitted to MSIX.



Every September 1, the performance period changes.

Resources for MSIX Child Count Reconciliation

In MSIX, you'll find two pages that contain resources that can help guide your State through the Child Count Reconciliation Process:

- Navigate to the **Training** Page, under Webinars you can download the "MSIX Child Count Reconciliation Webinar 2019" Slide Deck
- Navigate to the **Resources** Page, under Policies, Regulations, and Parent Information, you can download the "MSIX Child Count Logic Reference Guide." Under Technical References you can download the "Child Count Reconciliation Recommended Guidance"

Q&A





Thank You!

SEPTEMBER 8, 2022



Benjamin Starr: Benjamin.Starr@ed.gov

Preeti Choudhary: Preeti.Choudhary@ed.gov

Contact Heather Medina for the MSIX Child Count Tracking Template: HMedina@WestEd.org

MSIX Help Desk: MSIXSupport@deloitte.com OR 1-866-878-9525, 9:30 AM – 6:30 PM Monday - Fridays

Please join us for
MEP EDFacts/CSPR Submissions for SY 2021-2022
on Thursday, 9/22, from 3-4:30pm!